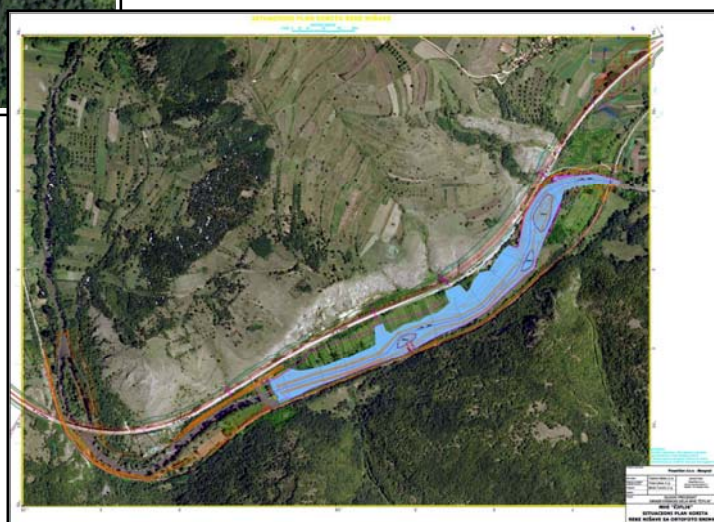


HPP AND DAM CIFLIK



Contract title: **FINAL AND DETAIL DESIGN FOR HPP AND DAM CIFLIK**

Location/River: Ciflik / Nisava River – SERBIA

Employer: “Power Gen” Ltd. Beograd SERBIA

Commencement date: 2013.

Completion date: 2014.

Investments cost: 4,800,000.00 Eur

Hydrology data

Average discharge 40 m³/s
PMF flood 980 m³/s

Dam

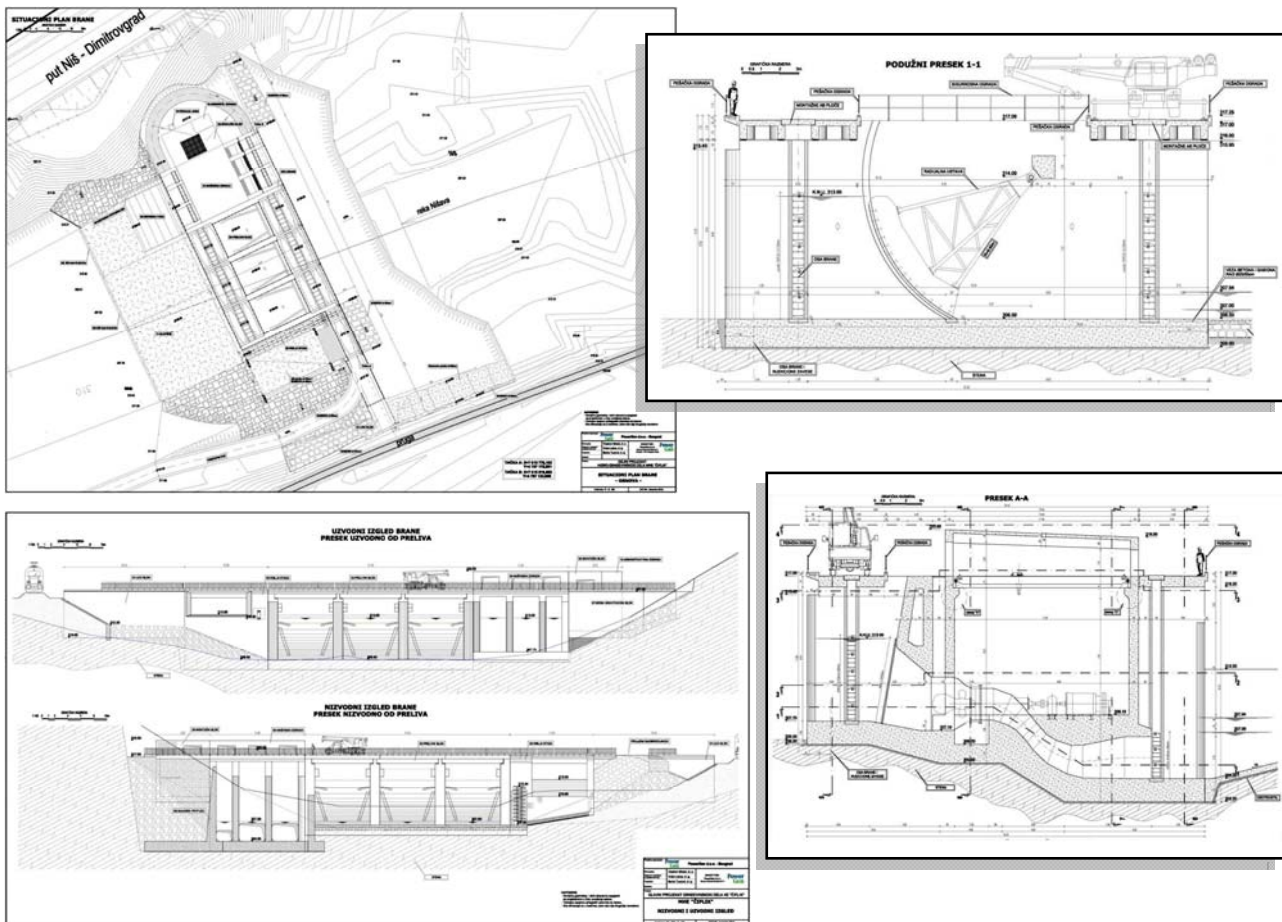
Type Concrete gravity dam
Height 14.50 m
Crest length 85.00 m

Spillway

Type Gated (radial gates) / 3 bays

HPP

Installed capacity 1.80 MW (3 units)
Turbine type Kaplan (S-type)



Description of the Project: Location of designed Ciflik Dam is on river Nisava, in Serbia. The main purpose of Ciflik reservoir is power generation and flood control for downstream area.

Ciflik Dam, 14.50 high, is designed as a concrete gravity dam. Three gated and one ungated spillway bays with stilling basin, have sufficient capacity to convey the maximum designed flood with retention in the reservoir storage available. Appurtenant structures includes, power intake with penstock and fish track. Designed power station has the installed capacity of 1.80 MW with discharge of 40 m³/sec.

The Services Provided: Preparation of Final and Design with Tender Documents have been the most essential goals of the Project, including the following specific Consulting Services:

- Determination of General Layout, optimization and engineering design of the Dam, Appurtenant Structures and HPP.
- Preparation static, stability and dynamic analyses
- Preparation formwork drawings
- Preparation reinforcement drawings
- Implementation of Cost Estimate with Construction Time Schedule for civil works stage;
- Preparation of Tender Documents for civil works.